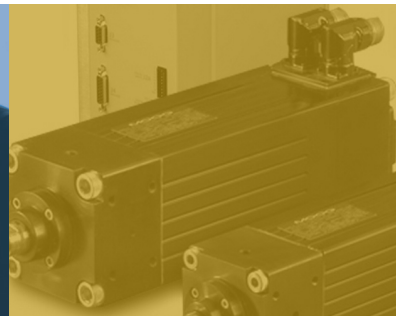


ELECTRIC MOTION CONTROL SOLUTIONS

Using our standard products to solve your unique motion challenges.



HIGH PERFORMANCE BRUSHLESS SERVO MOTORS

MOOG

Compact Dynamic Servo Motors CD Series

CD Ranges	
Continuous Torque	
Nm (lbf-in)	0.15 to 74.2 (1.3 to 657)
Peak Torque	
Nm (lbf-in)	0.50 to 240 (4.4 to 2,124)
Speed	Up to 11,700 RPM
6 Frame Sizes	40 to 190 mm

- Superior motor dynamics
- Proprietary, low cog design
- Available as frameless design
- Custom windings and designs available



CD Motors



Frameless Package for CD & MD

Maximum Dynamic Servo Motors MD Series

MD Ranges	
Continuous Torque	
Nm (lbf-in)	2.2 to 1,034 (20 to 9,152)
Peak Torque	
Nm (lbf-in)	10 to 2,012 (89 to 17,808)
Speed	Up to 11,700 RPM
7 Frame Sizes	40 to 190 mm

- Highest dynamics, power density
- Exceptional overload capacity
- Cooling options: air or liquid
- High angular acceleration
- Available as frameless design
- Custom windings and designs available



MD Motors

Explosion Proof Dynamic Servo Motors ExD Series

ExD Ranges	
Continuous Torque	
Nm (lbf-in)	0.52 to 66.68 (4.6 to 590)
Peak Torque	
Nm (lbf-in)	1.0 to 239.3 (14.2 to 2,118)
Speed	Up to 7,800 RPM
3 Frame Sizes	70, 140, 190 mm

- Certified to be in compliance with ATEX and IECEx standards
- Flameproof & dust protection



ExD Motors

AUTHORIZED MOOG ELECTROMECHANICAL REPRESENTATIVE



JE MYLES, INC.

310 Executive Drive
Troy, MI 48083

Telephone: +1 248 583 1020

Fax: +1 248 583 6998

www.mylesgroupcompanies.com

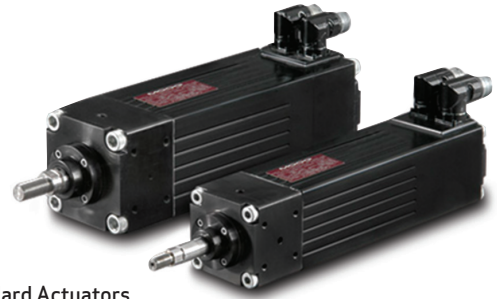
PLACE BUSINESS CARD HERE

HIGH PERFORMANCE BRUSHLESS SERVO ACTUATORS

Brushless Servo Actuators Standard Series

Standard Series Ranges	
Continuous Force Nm (lbf)	2.2 to 27.8 (485 to 6,242)
Peak Force Nm (lbf)	7.3 to 72.3 (1,641 to 16,243)
Rod Speed mm/sec (in/sec)	Up to 641 (Up to 25.2)
Stroke Length mm (in)	150, 300 (6, 12)

- High dynamic load capacity
- Inverted ball screw design
- Compact, high power density
- 3 frame sizes available
- Ball screw only

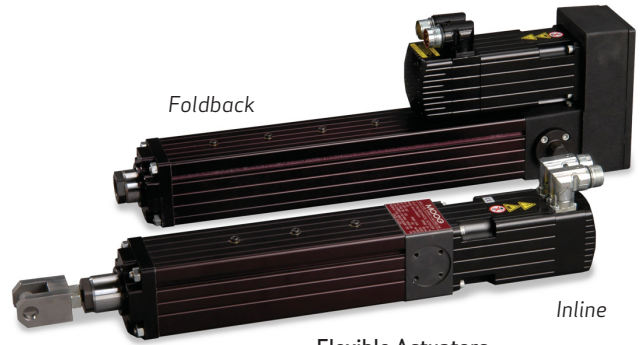


Standard Actuators

Flexible Series

Flexible Series Ranges	
Continuous Force Nm (lbf)	1.0 to 96 (229 to 21,581)
Peak Force Nm (lbf)	3.6 to 115.6 (801 to 25,987)
Rod Speed mm/sec (in/sec)	Up to 1,600 (Up to 63)
Stroke Length mm (in)	Up to 2,500 (Up to 98.4)

- Inline and foldback design
- Variety of motor windings
- Several screw leads for speed/force variations
- Ball screw and roller screw available



Foldback

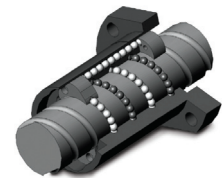
Inline

Flexible Actuators

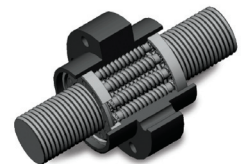
BALL SCREWS AND ROLLER SCREWS

Ball Screw Ranges	
Dynamic Load Rating (kN)	Up to 400
Static Load Rating (kN)	Up to 900
Diameter (mm)	13 to 100
Stroke Length (mm)	Up to 3,600
Leads (mm)	4 to 50

Roller Screw Ranges	
Dynamic Load Rating (kN)	Up to 670
Static Load Rating (kN)	Up to 1,400
Diameter (mm)	16 to 90
Stroke Length (mm)	Up to 1,800
Leads (mm)	2 to 36



Ball Screw



Roller Screw

HIGH PERFORMANCE SINGLE AND MULTI-AXIS SERVO DRIVES

Servo Drives MSD Series

Standard Series Ranges	
Continuous Current (amps)	4.0 to 450
Peak Current (amps)	8.0 to 765
Operating Voltage	115 to 460

- Single & Multi-Axis
- Built in PLC per IEC 61131
- Air or liquid cooled
- Wide range of fieldbus communications
- Coordinated motion across multiple axes
- Line regen available



MSD Drives

MOOG